



**NEW**

# Dental 3D

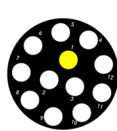
Think 3D Dental 3D Scan System



Articulator Scan



allin one



Die Scan



Impression Scan



Implanting Scan



Bite Scan

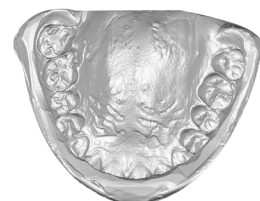
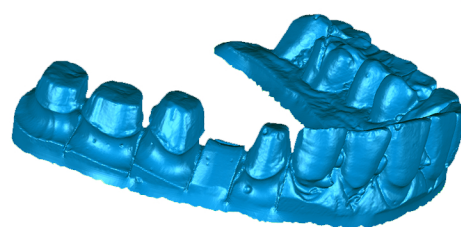
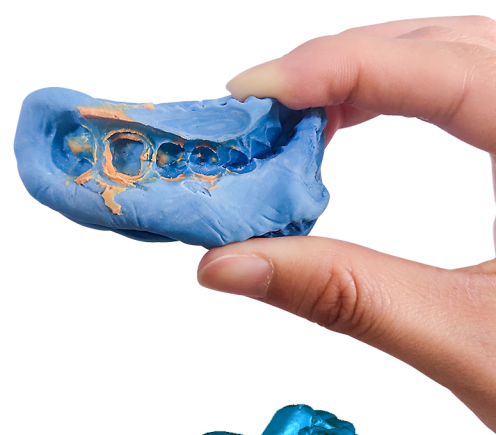


Un-separated Model Scan



Texture Color Scan

Camera	Industrial Camera 1.3MP*2
Lens	16mm/5mp*2
Projector	DLP 1280*1080; white/blue light optional
Range of view	120mm*100mm
Turntable	auto dual-axis turntable
Accuracy	<10 μm
Scan speed	Full arch <45s; Impression < 75s; Occulsion < 10S
Power	USB2.0 /12V 5A
Function	Bite / Impression /Articulator/Wax-up / Implant /Separated Model Scan/ All-in-One / Single piece Scan
Export	AC/STL/OBJ
Software	Free updated + integrated with EXOCAD
OEM	House + Software alteration
Add scan	One key automatically



Support implant scan  
Articulator scan

Golden design scan  
reduce blind angle

Accuracy  
<10 μm

Compatible with  
EXOCAD

Source manufacturer,  
independent property rights

All-in-one scan

